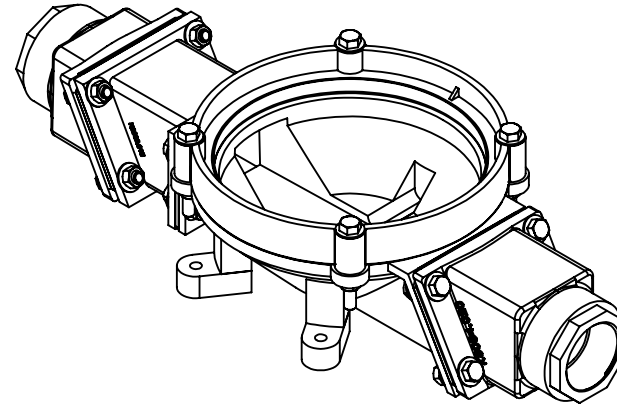
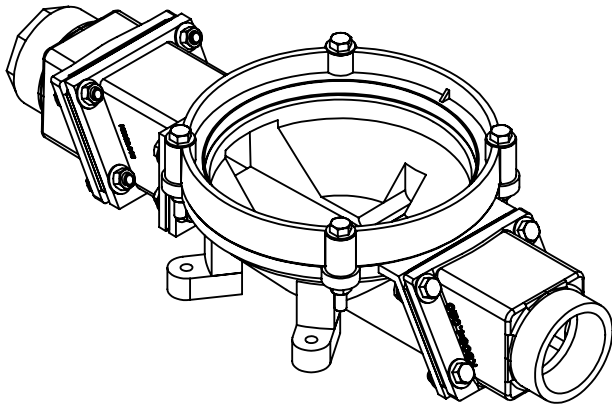


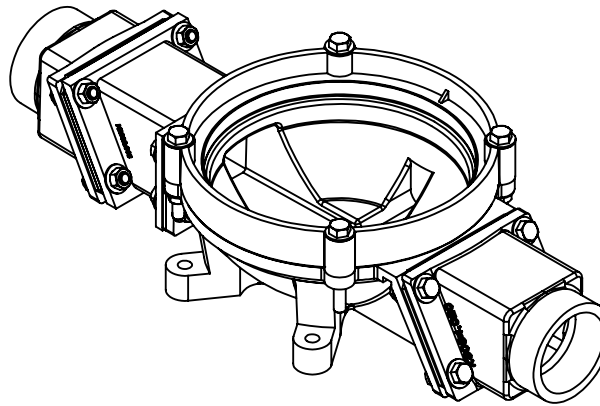
ABOWL #1  
90° X 90° (1.5" X 2.0")



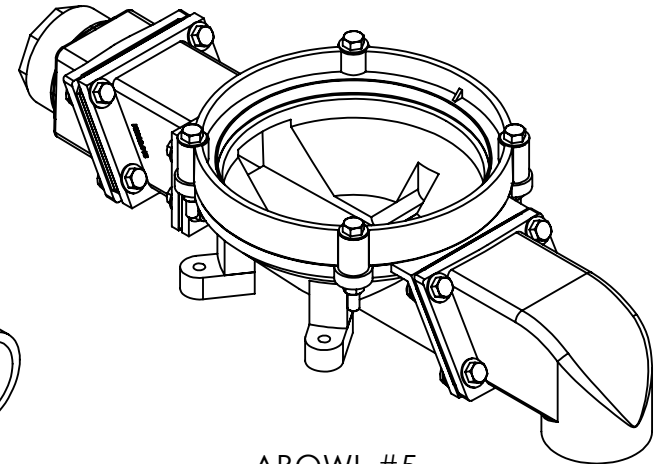
ABOWL #2  
STRAIGHT (1.5" X 1.5")



ABOWL #3  
STRAIGHT (1.5" X 2.0")



ABOWL #4  
STRAIGHT (2.0" X 2.0")



ABOWL #5  
STRAIGHT X 90° (1.5" X 2.0")

NOTES:

**PROPRIETARY AND CONFIDENTIAL**

THE INFORMATION CONTAINED IN THIS DRAWING IS THE SOLE PROPERTY OF KECO PUMP AND EQUIPMENT. ANY REPRODUCTION IN PART OR AS A WHOLE WITHOUT THE WRITTEN PERMISSION OF KECO PUMP AND EQUIPMENT IS PROHIBITED.

**UNLESS OTHERWISE SPECIFIED:**

DIMENSIONS ARE IN INCHES  
TOLERANCES:  
FRACTIONAL  $\pm 1/32$   
ONE PLACE DECIMAL  $\pm .1$   
TWO PLACE DECIMAL  $\pm .03$   
THREE PLACE DECIMAL  $\pm .020$   
ANGULAR  $\pm .5^\circ$

MATERIAL

DRAWN	AWS	
	PREVIOUS	CURRENT
REVISION #	1.0	1.0
DATE: 6/15/2017		
COMMENTS:		



KECO PUMP AND EQUIPMENT  
WWW.PUMPAHEAD.COM

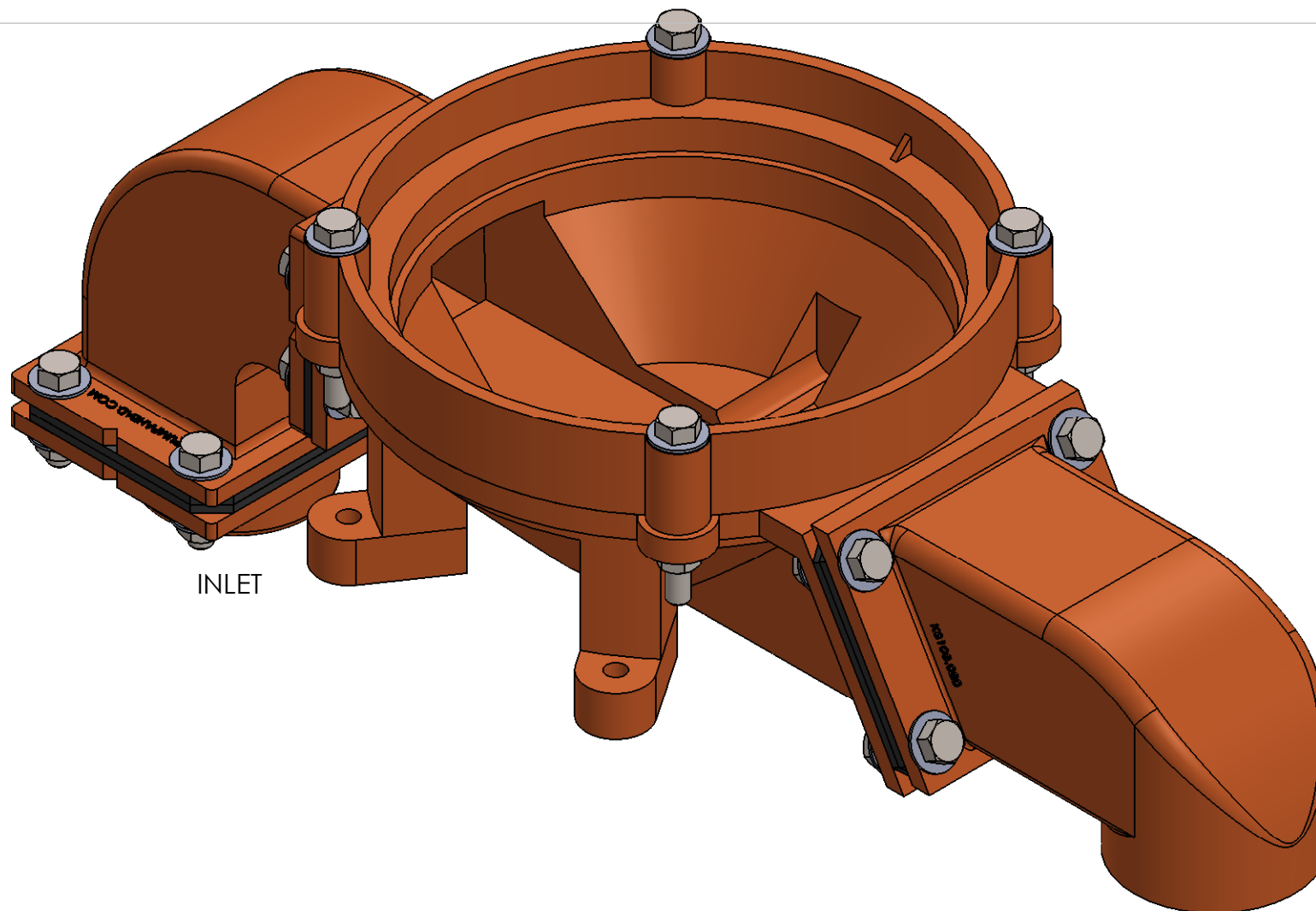
PART NUMBER - TITLE

ABOWL PUMP ORIENTATIONS

DIMENSION: INCHES / (XX) MM

SCALE: A

SHEET 1 OF 13



INLET

OUTLET

# NOTES:

90° X 90° (1.5" X 2.0")

## PROPRIETARY AND CONFIDENTIAL

THE INFORMATION CONTAINED IN THIS DRAWING IS THE SOLE PROPERTY OF KECO PUMP AND EQUIPMENT. ANY REPRODUCTION IN PART OR AS A WHOLE WITHOUT THE WRITTEN PERMISSION OF KECO PUMP AND EQUIPMENT IS PROHIBITED.

## UNLESS OTHERWISE SPECIFIED:

DIMENSIONS ARE IN INCHES  
TOLERANCES:  
FRACTIONAL  $\pm 1/32$   
ONE PLACE DECIMAL  $\pm .1$   
TWO PLACE DECIMAL  $\pm .03$   
THREE PLACE DECIMAL  $\pm .020$   
ANGULAR  $\pm .5^\circ$

MATERIAL

DRAWN	AWS	
	PREVIOUS	CURRENT
REVISION #	1.0	1.0
DATE: 6/23/2015		
COMMENTS:		

KECO PUMP AND EQUIPMENT  
WWW.PUMPAHEAD.COM

PART NUMBER - TITLE

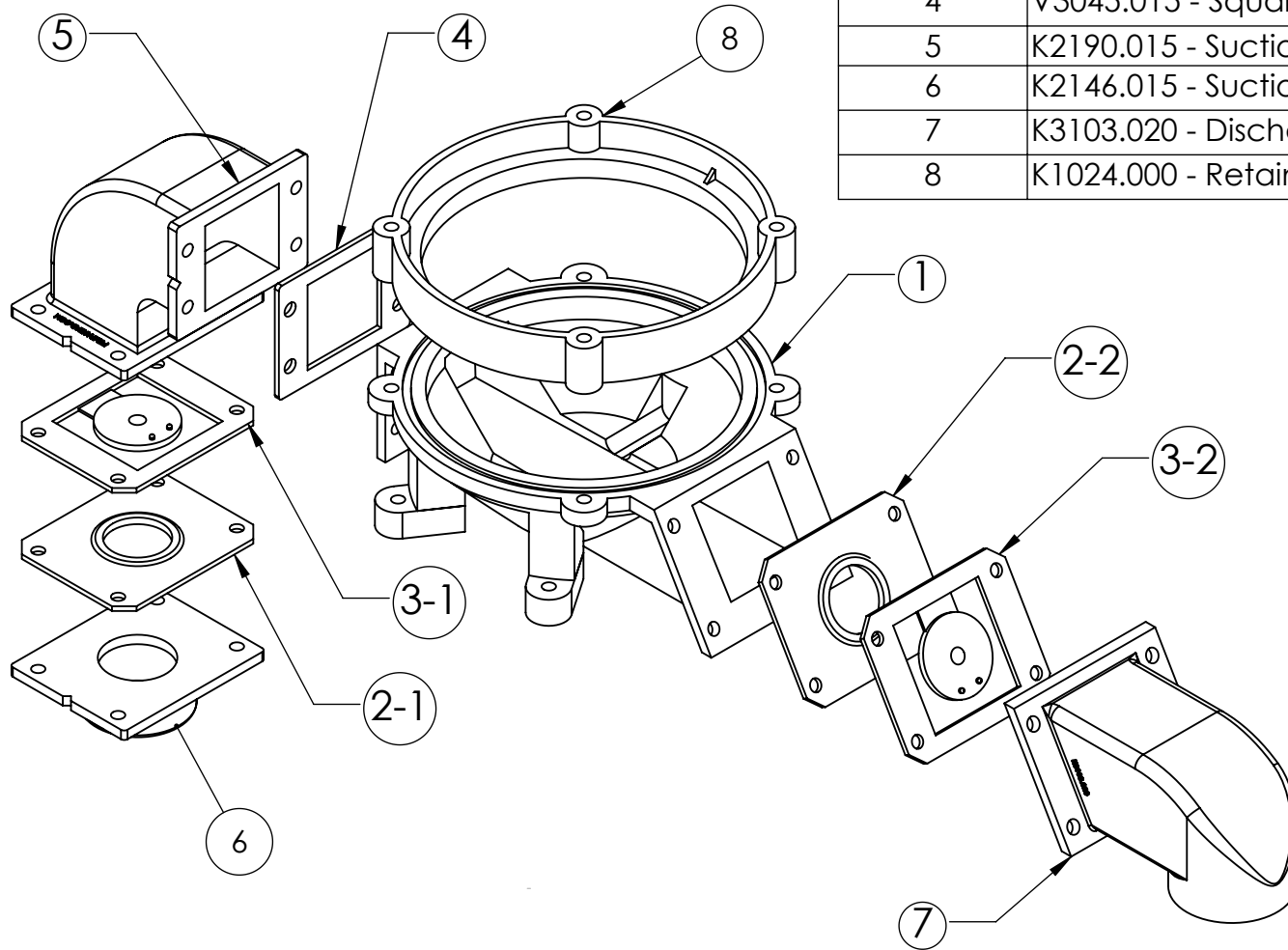
ABOWL #1

DIMENSION: INCHES / (XX) MM

SCALE: 1:2

SHEET 2 OF 13

ITEM NO.	PART NUMBER - DESCRIPTION	QTY.
1	K1021.000 - Pump Bowl	1
2	V2043.015 - Valve Seating Plate	2
3	V0041.015 - Valve	2
4	V3045.015 - Square Center Gasket	1
5	K2190.015 - Suction Elbow	1
6	K2146.015 - Suction Hose Adapter (Female)	1
7	K3103.020 - Discharge Elbow	1
8	K1024.000 - Retaining Ring	1



NOTES:  
STAINLESS STEEL FASTENERS NOT DEPICTED

**(3) P/N B-FLANGE HARDWARE**

Stainless Steel Flange Fasteners/Hardware Kit,  
Includes 4 Bolts, 8 Washers, 4 Nylon Lock Nut

**(1) P/N B-RING 2 BOWL**

Retaining Ring to Bowl Fasteners/Hardware Kit,  
Includes 4 Bolts, 8 Washers, 4 Nylon Lock Nut

**PROPRIETARY AND CONFIDENTIAL**

THE INFORMATION CONTAINED  
IN THIS DRAWING IS THE SOLE  
PROPERTY OF KECO PUMP AND  
EQUIPMENT. ANY  
REPRODUCTION IN PART OR AS  
A WHOLE WITHOUT THE  
WRITTEN PERMISSION OF  
KECO PUMP AND EQUIPMENT IS  
PROHIBITED.

**UNLESS OTHERWISE SPECIFIED:**

DIMENSIONS ARE IN INCHES  
TOLERANCES:  
FRACTIONAL  $\pm 1/32$   
ONE PLACE DECIMAL  $\pm .1$   
TWO PLACE DECIMAL  $\pm .03$   
THREE PLACE DECIMAL  $\pm .020$   
ANGULAR  $\pm .5^\circ$

**MATERIAL**

DRAWN	AWS	
	PREVIOUS	CURRENT
REVISION #	1.0	1.0
DATE: 6/23/2015		
COMMENTS:		



KECO PUMP AND EQUIPMENT  
WWW.PUMPAHEAD.COM

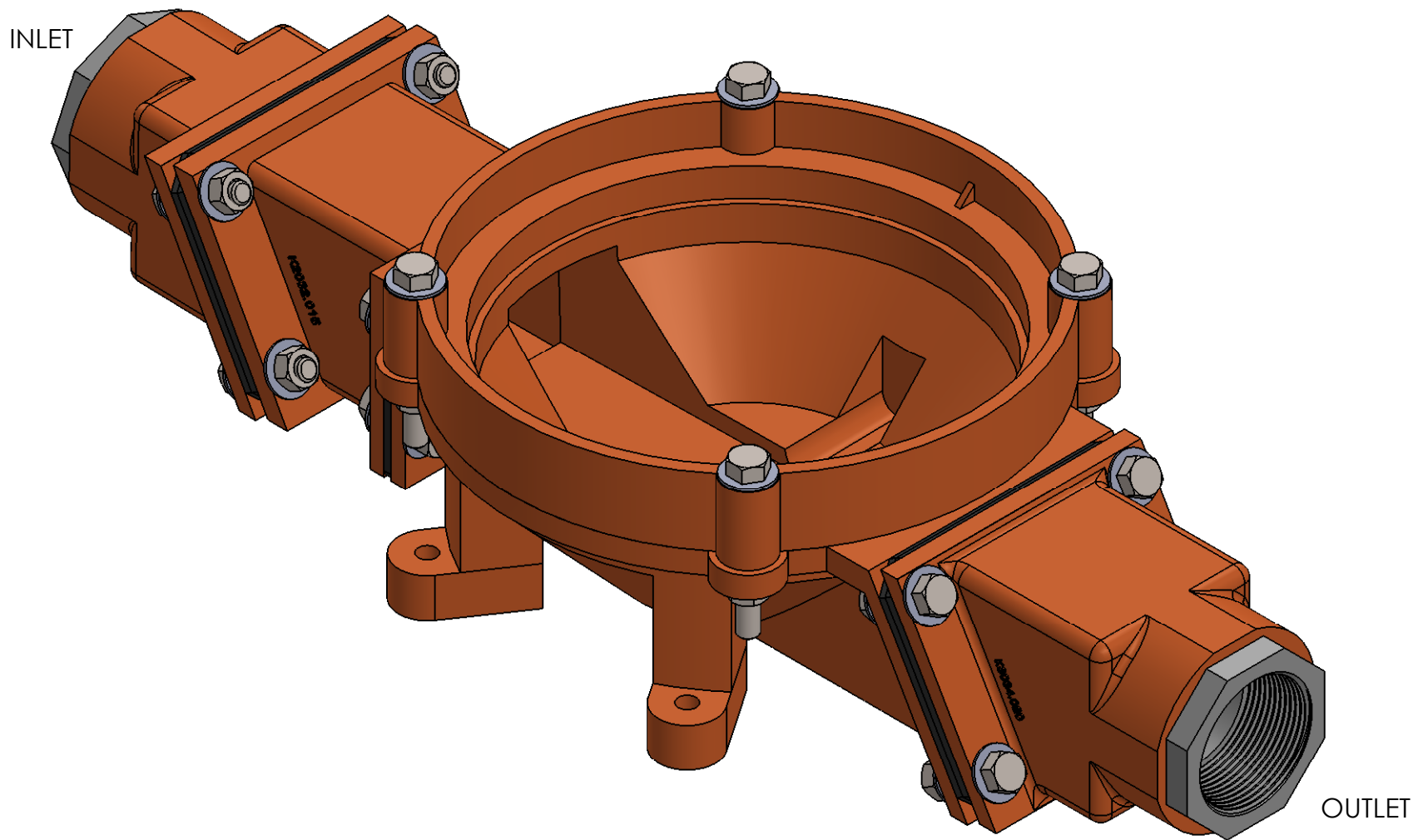
PART NUMBER - TITLE

ABOWL #1 EXPLODED VIEW

DIMENSION: INCHES / (XX) MM

SCALE: 1:4

SHEET 3 OF 13



NOTES:  
STRAIGHT (1.5" X 1.5")

**PROPRIETARY AND CONFIDENTIAL**

THE INFORMATION CONTAINED IN THIS DRAWING IS THE SOLE PROPERTY OF KECO PUMP AND EQUIPMENT. ANY REPRODUCTION IN PART OR AS A WHOLE WITHOUT THE WRITTEN PERMISSION OF KECO PUMP AND EQUIPMENT IS PROHIBITED.

**UNLESS OTHERWISE SPECIFIED:**

DIMENSIONS ARE IN INCHES  
TOLERANCES:  
FRACTIONAL  $\pm 1/32$   
ONE PLACE DECIMAL  $\pm .1$   
TWO PLACE DECIMAL  $\pm .03$   
THREE PLACE DECIMAL  $\pm .020$   
ANGULAR  $\pm .5^\circ$

MATERIAL

DRAWN	AWS	
	PREVIOUS	CURRENT
REVISION #	1.0	1.0

DATE: 6/23/2015

COMMENTS:

KECO PUMP AND EQUIPMENT  
WWW.PUMPAHEAD.COM

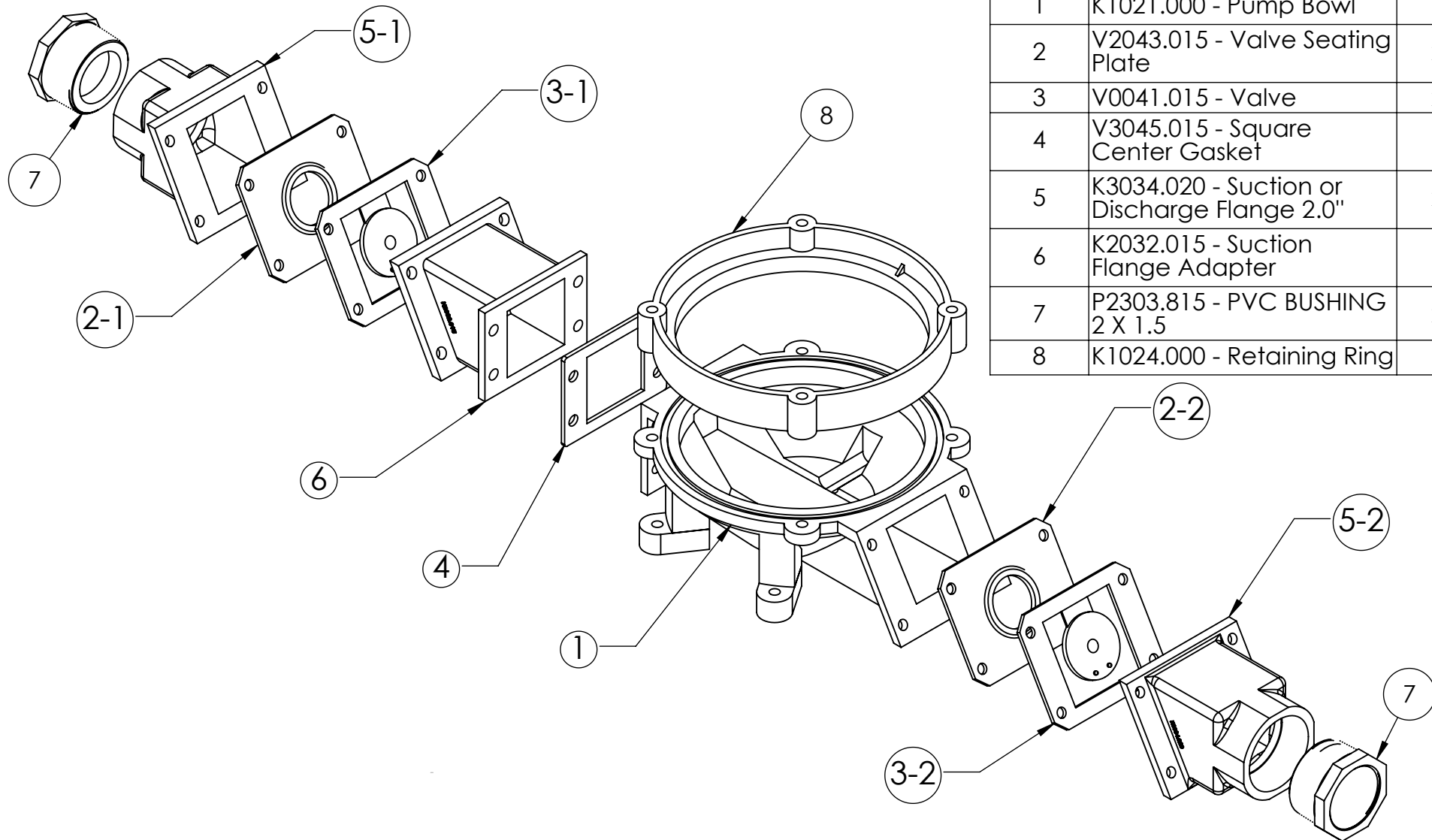
PART NUMBER - TITLE

ABOWL #2 ASSEMBLY

DIMENSION: INCHES / (XX) MM

SCALE: 1:2

SHEET 4 OF 13



ITEM NO.	PART NUMBER - DESCRIPTION	QTY.
1	K1021.000 - Pump Bowl	1
2	V2043.015 - Valve Seating Plate	2
3	V0041.015 - Valve	2
4	V3045.015 - Square Center Gasket	1
5	K3034.020 - Suction or Discharge Flange 2.0"	2
6	K2032.015 - Suction Flange Adapter	1
7	P2303.815 - PVC BUSHING 2 X 1.5	2
8	K1024.000 - Retaining Ring	1

NOTES:  
STAINLESS STEEL FASTENERS NOT DEPICTED

**(3) P/N B-FLANGE HARDWARE**

Stainless Steel Flange Fasteners/Hardware Kit,  
Includes 4 Bolts, 8 Washers, 4 Nylon Lock Nut

**(1) P/N B-RING 2 BOWL**

Retaining Ring to Bowl Fasteners/Hardware Kit,  
Includes 4 Bolts, 8 Washers, 4 Nylon Lock Nut

**PROPRIETARY AND CONFIDENTIAL**

THE INFORMATION CONTAINED  
IN THIS DRAWING IS THE SOLE  
PROPERTY OF KECO PUMP AND  
EQUIPMENT. ANY  
REPRODUCTION IN PART OR AS  
A WHOLE WITHOUT THE  
WRITTEN PERMISSION OF  
KECO PUMP AND EQUIPMENT IS  
PROHIBITED.

**UNLESS OTHERWISE SPECIFIED:**

DIMENSIONS ARE IN INCHES  
TOLERANCES:  
FRACTIONAL  $\pm 1/32$   
ONE PLACE DECIMAL  $\pm .1$   
TWO PLACE DECIMAL  $\pm .03$   
THREE PLACE DECIMAL  $\pm .020$   
ANGULAR  $\pm .5^\circ$

**MATERIAL**

DRAWN	AWS	
	PREVIOUS	CURRENT
REVISION #	1.0	1.0
DATE: 6/23/2015		
COMMENTS:		

**KECO** KECO PUMP AND EQUIPMENT  
WWW.PUMPAHEAD.COM

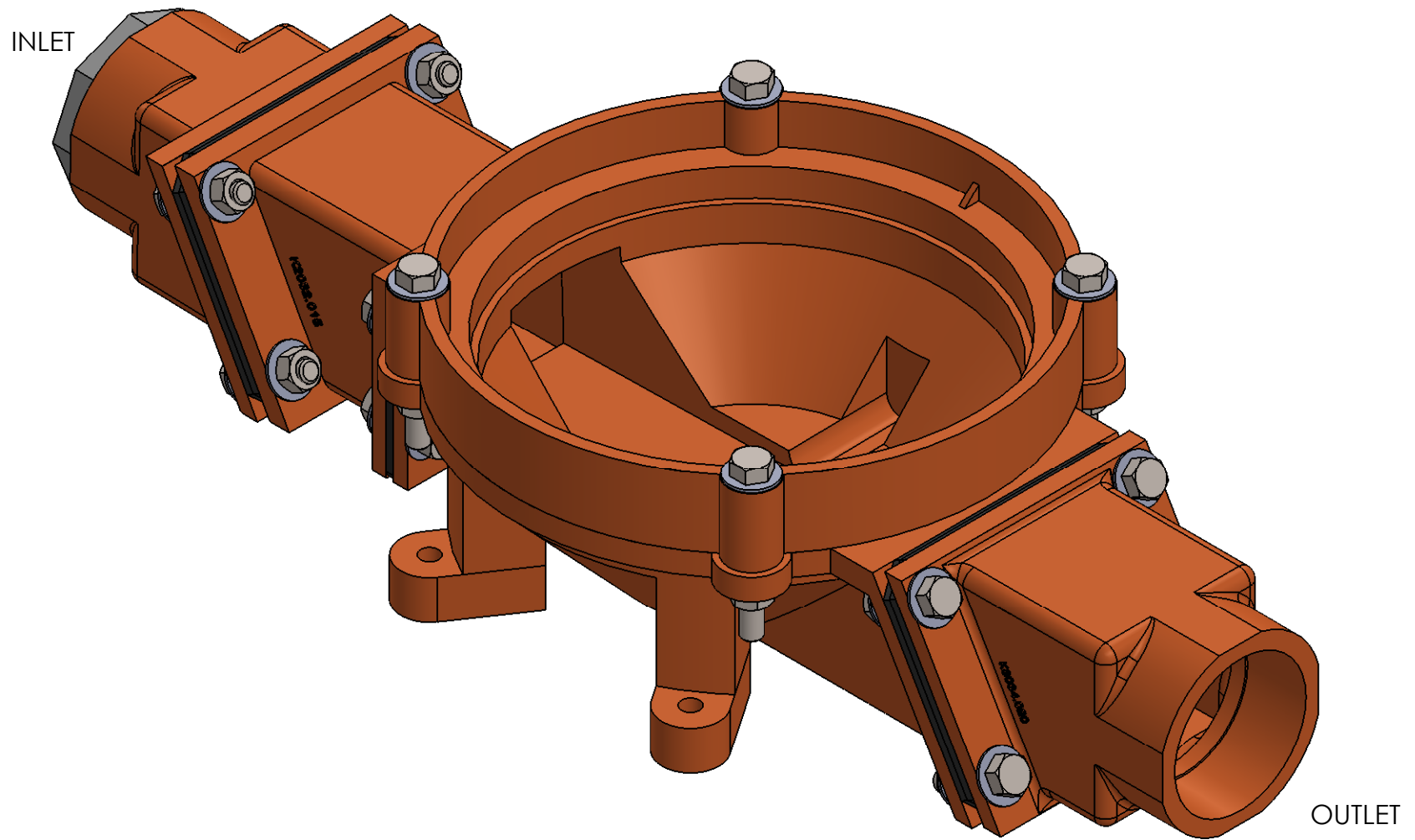
PART NUMBER - TITLE

ABOWL #2 EXPLODED VIEW

DIMENSION: INCHES / (XX) MM

SCALE: 1:4

SHEET 5 OF 13



NOTES:  
STRAIGHT (1.5" X 2.0")

**PROPRIETARY AND CONFIDENTIAL**

THE INFORMATION CONTAINED IN THIS DRAWING IS THE SOLE PROPERTY OF KECO PUMP AND EQUIPMENT. ANY REPRODUCTION IN PART OR AS A WHOLE WITHOUT THE WRITTEN PERMISSION OF KECO PUMP AND EQUIPMENT IS PROHIBITED.

**UNLESS OTHERWISE SPECIFIED:**

DIMENSIONS ARE IN INCHES  
TOLERANCES:  
FRACTIONAL  $\pm 1/32$   
ONE PLACE DECIMAL  $\pm .1$   
TWO PLACE DECIMAL  $\pm .03$   
THREE PLACE DECIMAL  $\pm .020$   
ANGULAR  $\pm .5^\circ$

MATERIAL

DRAWN	AWS	
	PREVIOUS	CURRENT
REVISION #	1.0	1.0

DATE: 6/23/2015

COMMENTS:

KECO PUMP AND EQUIPMENT

WWW.PUMPAHEAD.COM

PART NUMBER - TITLE

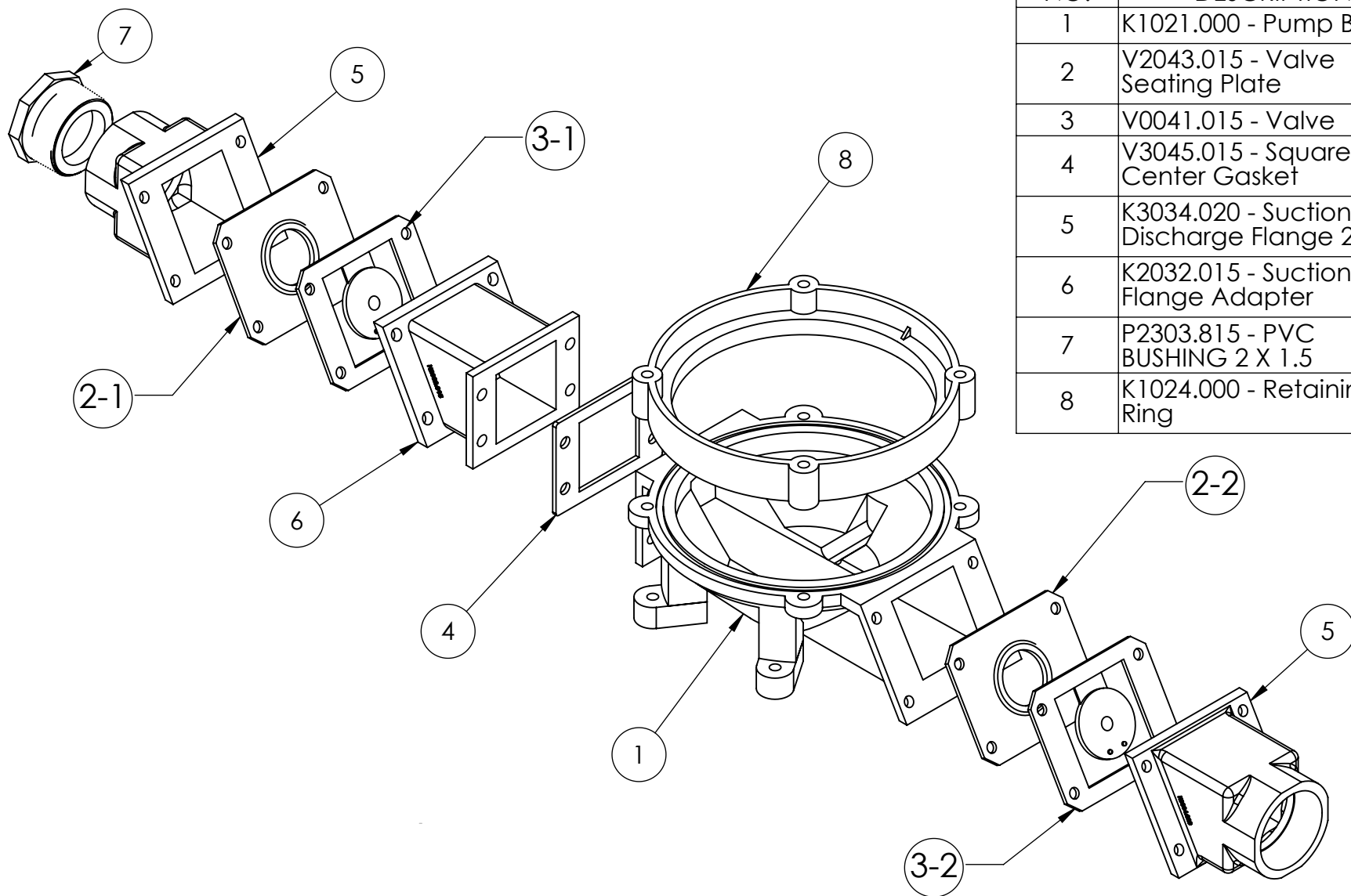
ABOWL #3 ASSEMBLY

DIMENSION: INCHES / (XX) MM

SCALE: 1:2

SHEET 6 OF 13





ITEM NO.	PART NUMBER - DESCRIPTION	QTY.
1	K1021.000 - Pump Bowl	1
2	V2043.015 - Valve Seating Plate	2
3	V0041.015 - Valve	2
4	V3045.015 - Square Center Gasket	1
5	K3034.020 - Suction or Discharge Flange 2.0"	2
6	K2032.015 - Suction Flange Adapter	1
7	P2303.815 - PVC BUSHING 2 X 1.5	1
8	K1024.000 - Retaining Ring	1

NOTES:  
STAINLESS STEEL FASTENERS NOT DEPICTED

**PROPRIETARY AND CONFIDENTIAL**

THE INFORMATION CONTAINED IN THIS DRAWING IS THE SOLE PROPERTY OF KECO PUMP AND EQUIPMENT. ANY REPRODUCTION IN PART OR AS A WHOLE WITHOUT THE WRITTEN PERMISSION OF KECO PUMP AND EQUIPMENT IS PROHIBITED.

**UNLESS OTHERWISE SPECIFIED:**

DIMENSIONS ARE IN INCHES  
TOLERANCES:  
FRACTIONAL  $\pm 1/32$   
ONE PLACE DECIMAL  $\pm .1$   
TWO PLACE DECIMAL  $\pm .03$   
THREE PLACE DECIMAL  $\pm .020$   
ANGULAR  $\pm .5^\circ$

MATERIAL

DRAWN	AWS	
	PREVIOUS	CURRENT
REVISION #	1.0	1.0

DATE: 6/23/2015

COMMENTS:

**KECO** KECO PUMP AND EQUIPMENT  
WWW.PUMPAHEAD.COM

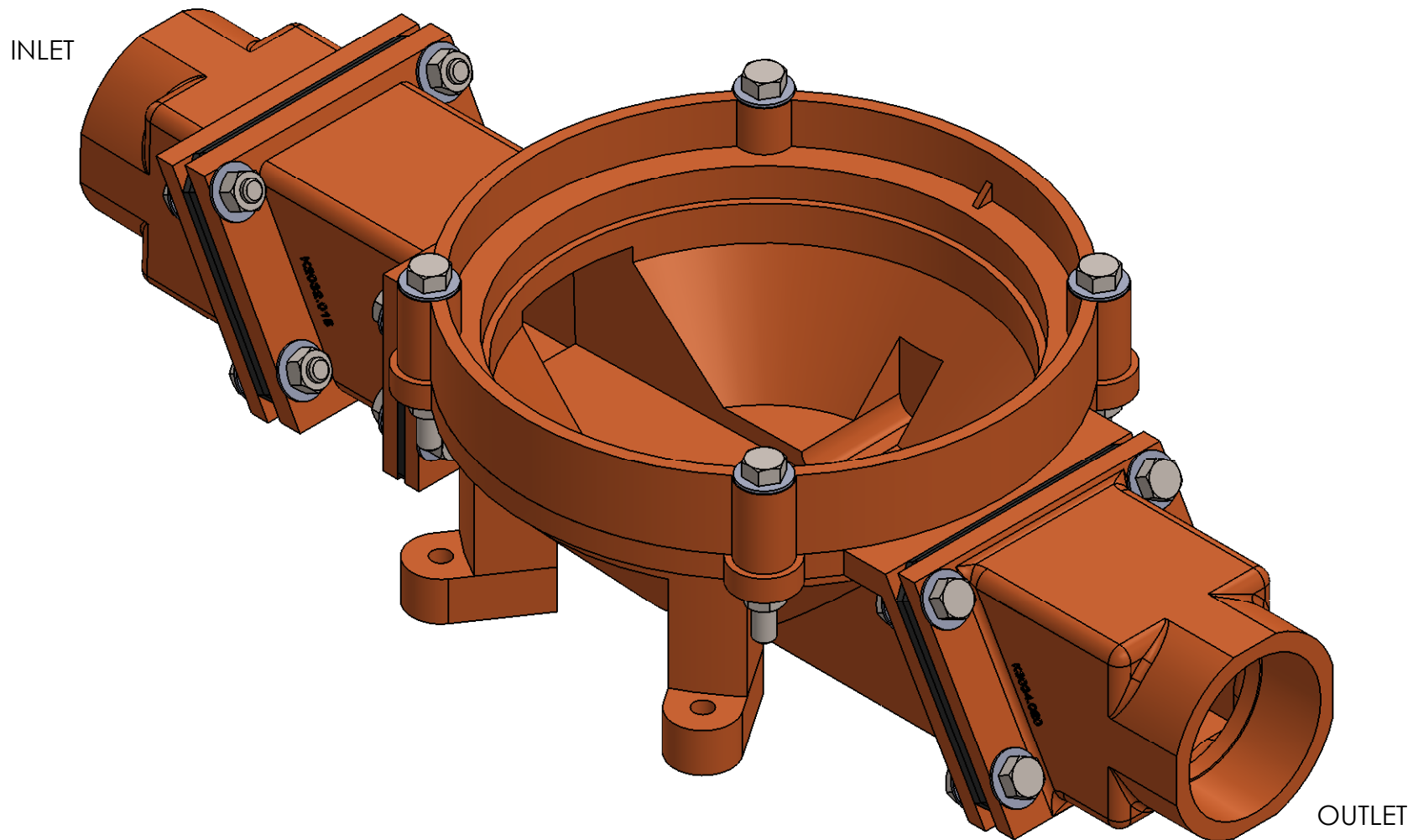
PART NUMBER - TITLE

ABOWL #3 EXPLODED VIEW

DIMENSION: INCHES / (XX) MM

SCALE: 1:4

SHEET 7 OF 13



NOTES:  
STRAIGHT (2.0" X 2.0")

**PROPRIETARY AND CONFIDENTIAL**

THE INFORMATION CONTAINED IN THIS DRAWING IS THE SOLE PROPERTY OF KECO PUMP AND EQUIPMENT. ANY REPRODUCTION IN PART OR AS A WHOLE WITHOUT THE WRITTEN PERMISSION OF KECO PUMP AND EQUIPMENT IS PROHIBITED.

**UNLESS OTHERWISE SPECIFIED:**

DIMENSIONS ARE IN INCHES  
TOLERANCES:  
FRACTIONAL  $\pm 1/32$   
ONE PLACE DECIMAL  $\pm .1$   
TWO PLACE DECIMAL  $\pm .03$   
THREE PLACE DECIMAL  $\pm .020$   
ANGULAR  $\pm .5^\circ$

MATERIAL

DRAWN	AWS	
	PREVIOUS	CURRENT
REVISION #	1.0	1.0

DATE: 6/23/2015

COMMENTS:

KECO PUMP AND EQUIPMENT  
WWW.PUMPAHEAD.COM

PART NUMBER - TITLE

ABOWL #4 ASSEMBLY

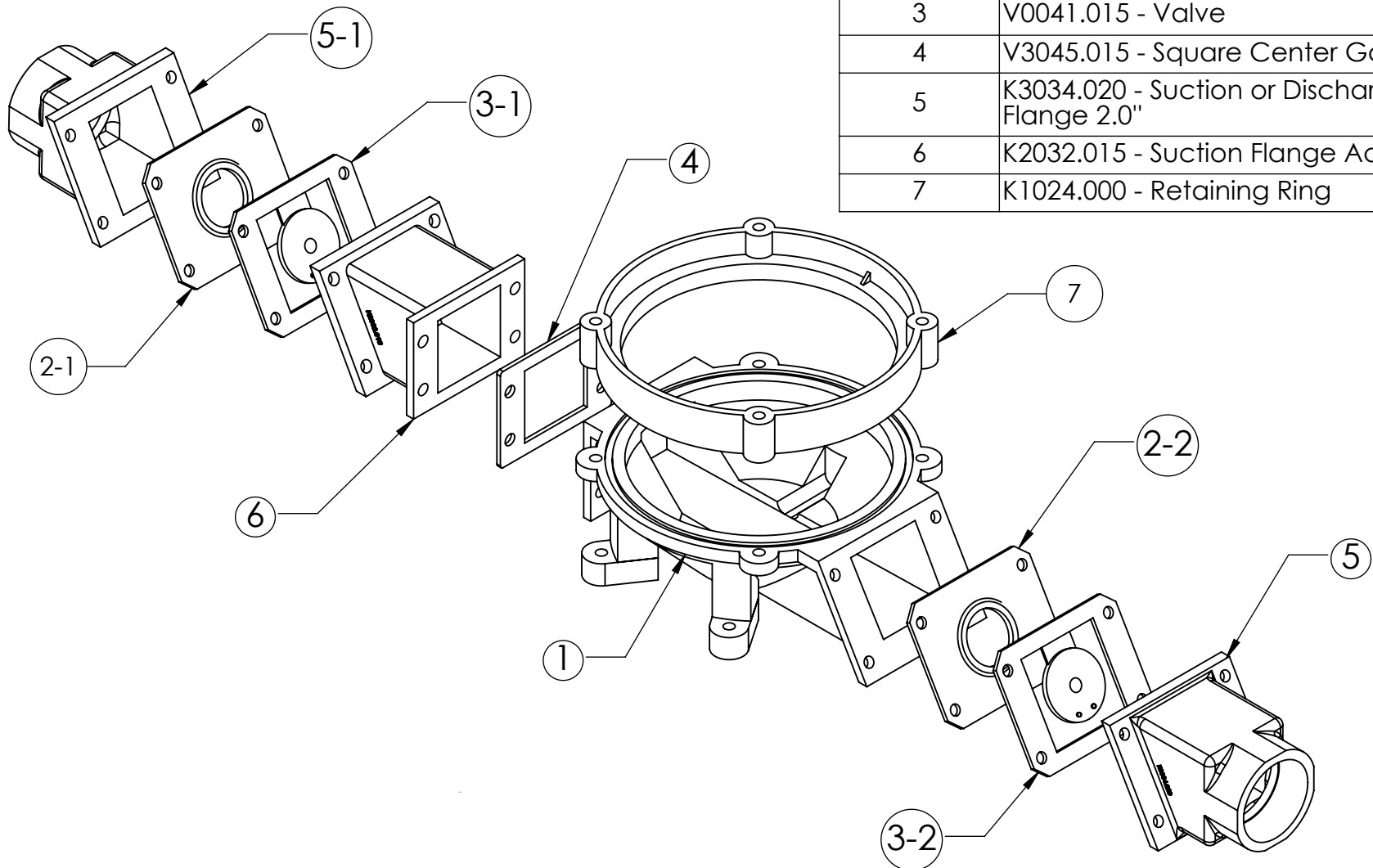
DIMENSION: INCHES / (XX) MM

SCALE: 1:2

SHEET 8 OF 13



ITEM NO.	PART NUMBER - DESCRIPTION	QTY.
1	K1021.000 - Pump Bowl	1
2-1	V2043.015 - Valve Seating Plate	2
3	V0041.015 - Valve	2
4	V3045.015 - Square Center Gasket	1
5	K3034.020 - Suction or Discharge Flange 2.0"	2
6	K2032.015 - Suction Flange Adapter	1
7	K1024.000 - Retaining Ring	1



NOTES:  
STAINLESS STEEL FASTENERS NOT DEPICTED


**(3) P/N B-FLANGE HARDWARE**  
Stainless Steel Flange Fasteners/Hardware Kit,  
Includes 4 Bolts, 8 Washers, 4 Nylon Lock Nut

**(1) P/N B-RING 2 BOWL**  
Retaining Ring to Bowl Fasteners/Hardware Kit,  
Includes 4 Bolts, 8 Washers, 4 Nylon Lock Nut

**PROPRIETARY AND CONFIDENTIAL**  
  
THE INFORMATION CONTAINED  
IN THIS DRAWING IS THE SOLE  
PROPERTY OF KECO PUMP AND  
EQUIPMENT. ANY  
REPRODUCTION IN PART OR AS  
A WHOLE WITHOUT THE  
WRITTEN PERMISSION OF  
KECO PUMP AND EQUIPMENT IS  
PROHIBITED.

UNLESS OTHERWISE SPECIFIED:  
  
DIMENSIONS ARE IN INCHES  
TOLERANCES:  
FRACTIONAL  $\pm 1/32$   
ONE PLACE DECIMAL  $\pm .1$   
TWO PLACE DECIMAL  $\pm .03$   
THREE PLACE DECIMAL  $\pm .020$   
ANGULAR  $\pm .5^\circ$   
  
MATERIAL

DRAWN	AWS	
REVISION #	PREVIOUS	CURRENT
	1.0	1.0
DATE: 6/23/2015		
COMMENTS:		

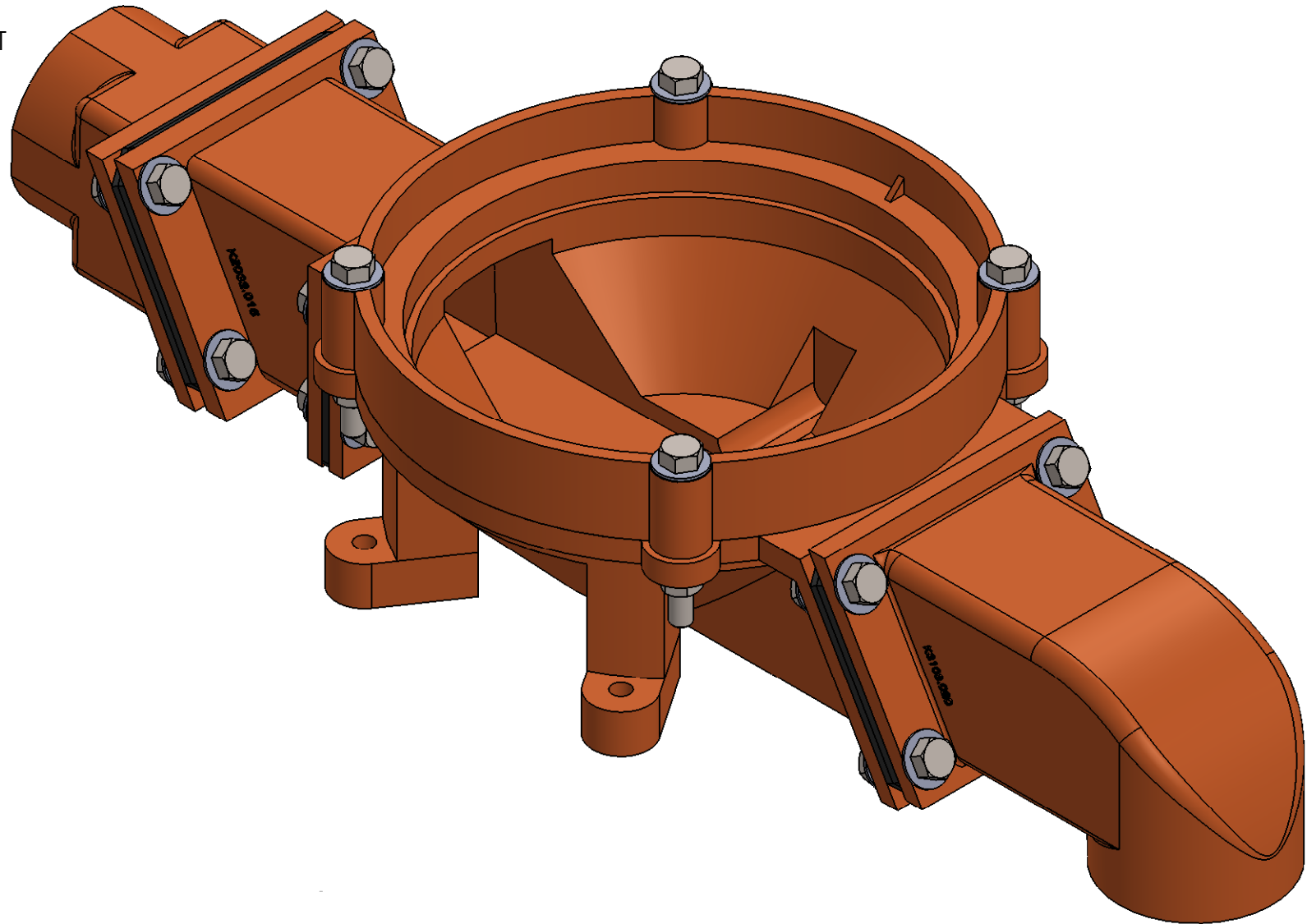


KECO PUMP AND EQUIPMENT

WWW.PUMPAHEAD.COM

PART NUMBER - TITLE	
ABOWL #4 EXPLODED VIEW	
DIMENSION: INCHES / (XX) MM	
SCALE: 1:4	SHEET 9 OF 13

INLET



OUTLET

NOTES:  
STRAIGHT X 90° (2.0" X 2.0")

**PROPRIETARY AND CONFIDENTIAL**

THE INFORMATION CONTAINED IN THIS DRAWING IS THE SOLE PROPERTY OF KECO PUMP AND EQUIPMENT. ANY REPRODUCTION IN PART OR AS A WHOLE WITHOUT THE WRITTEN PERMISSION OF KECO PUMP AND EQUIPMENT IS PROHIBITED.

**UNLESS OTHERWISE SPECIFIED:**

DIMENSIONS ARE IN INCHES  
TOLERANCES:  
FRACTIONAL  $\pm 1/32$   
ONE PLACE DECIMAL  $\pm .1$   
TWO PLACE DECIMAL  $\pm .03$   
THREE PLACE DECIMAL  $\pm .020$   
ANGULAR  $\pm .5^\circ$

MATERIAL

DRAWN	AWS	
	PREVIOUS	CURRENT
REVISION #	1.0	1.0

DATE: 6/23/2015

COMMENTS:

KECO PUMP AND EQUIPMENT  
WWW.PUMPAHEAD.COM

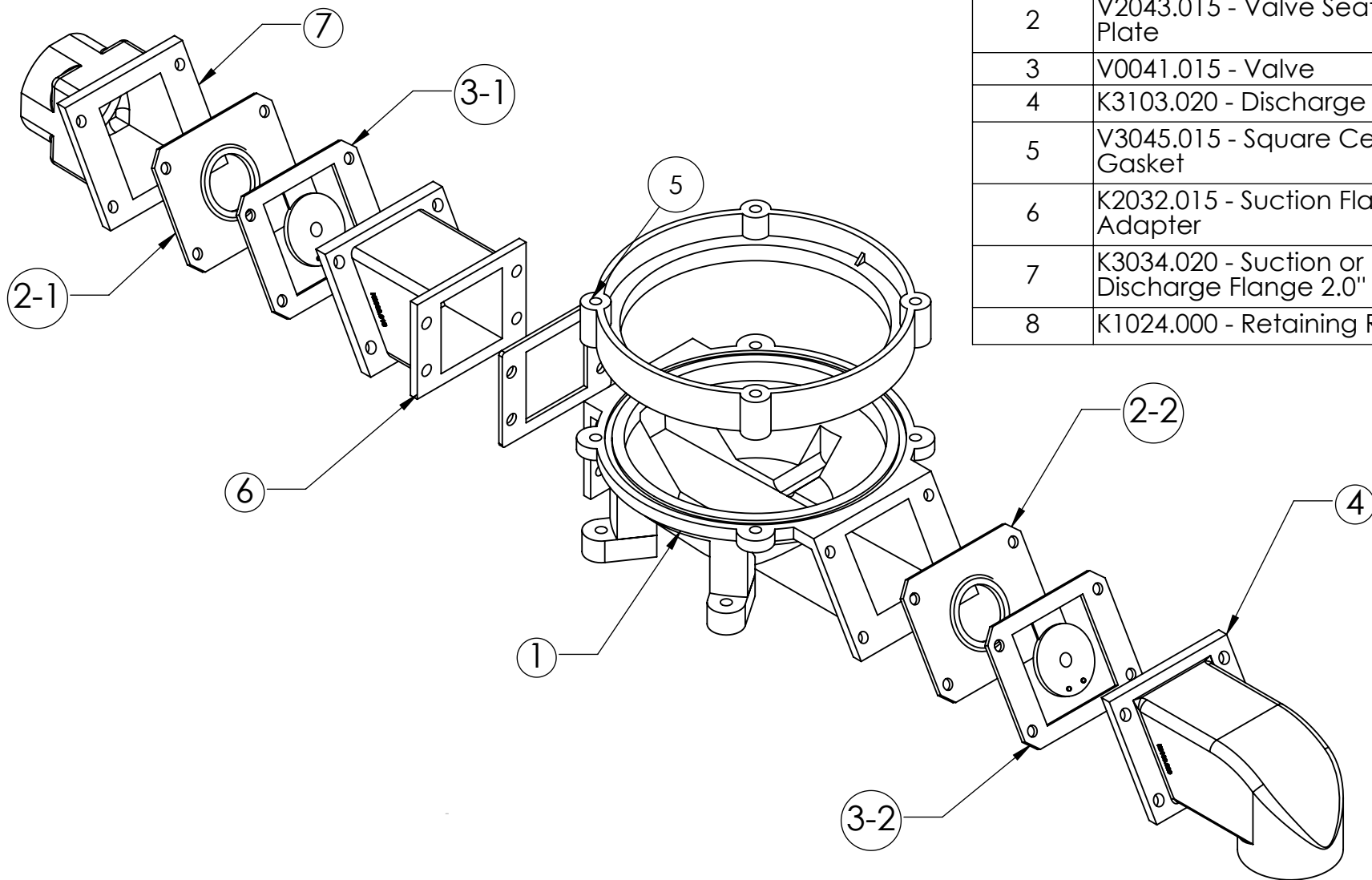
PART NUMBER - TITLE

ABOWL #5 (HARDWARE)

DIMENSION: INCHES / (XX) MM

SCALE: 1:2

SHEET 10 OF 13



ITEM NO.	PART NUMBER - DESCRIPTION	QTY.
1	K1021.000 - Pump Bowl	1
2	V2043.015 - Valve Seating Plate	2
3	V0041.015 - Valve	2
4	K3103.020 - Discharge Elbow	1
5	V3045.015 - Square Center Gasket	1
6	K2032.015 - Suction Flange Adapter	1
7	K3034.020 - Suction or Discharge Flange 2.0"	1
8	K1024.000 - Retaining Ring	1

NOTES:  
STAINLESS STEEL FASTENERS NOT DEPICTED

**(3) P/N B-FLANGE HARDWARE**

Stainless Steel Flange Fasteners/Hardware Kit,  
Includes 4 Bolts, 8 Washers, 4 Nylon Lock Nut

**(1) P/N B-RING 2 BOWL**

Retaining Ring to Bowl Fasteners/Hardware Kit,  
Includes 4 Bolts, 8 Washers, 4 Nylon Lock Nut

**PROPRIETARY AND CONFIDENTIAL**

THE INFORMATION CONTAINED  
IN THIS DRAWING IS THE SOLE  
PROPERTY OF KECO PUMP AND  
EQUIPMENT. ANY  
REPRODUCTION IN PART OR AS  
A WHOLE WITHOUT THE  
WRITTEN PERMISSION OF  
KECO PUMP AND EQUIPMENT IS  
PROHIBITED.

**UNLESS OTHERWISE SPECIFIED:**

DIMENSIONS ARE IN INCHES  
TOLERANCES:  
FRACTIONAL  $\pm 1/32$   
ONE PLACE DECIMAL  $\pm .1$   
TWO PLACE DECIMAL  $\pm .03$   
THREE PLACE DECIMAL  $\pm .020$   
ANGULAR  $\pm .5^\circ$

**MATERIAL**

DRAWN	AWS	
	PREVIOUS	CURRENT
REVISION #	1.0	1.0

DATE: 6/23/2015

COMMENTS:



KECO PUMP AND EQUIPMENT  
WWW.PUMPAHEAD.COM

PART NUMBER - TITLE

ABOWL #5 EXPLODED VIEW

DIMENSION: INCHES / (XX) MM

SCALE: 1:4

SHEET 11 OF 13

# Suction Valve Replacement

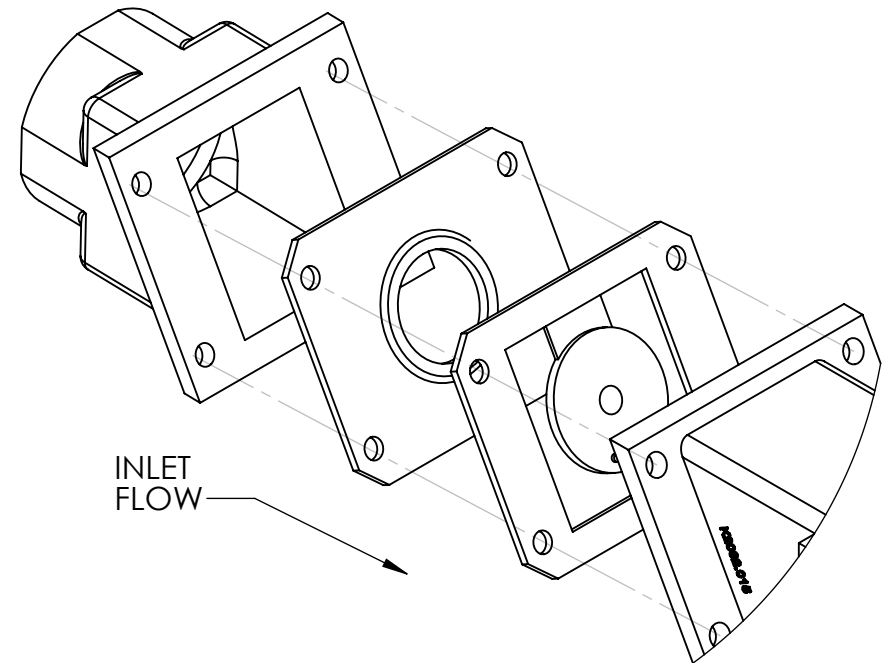
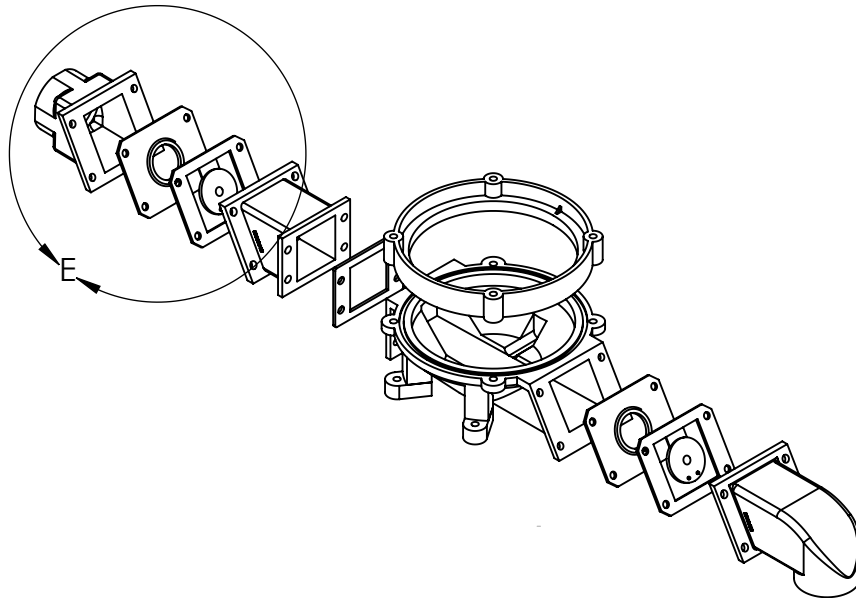
(Single / double diaphragm models)

## Important Note: Do not over tighten valves or gasket!!

Torque Specification is 55"/lbs or 4.5'/lbs without a torque wrench, this is approximately hand tight plus 3/4 turn for valves and gaskets.

## Important Note:

Ensure aluminum pump flanges are smooth and clean before installing new valves. If pitted or corroded, use a steel brush or grinding wheel to smooth and clean flange faces. If severely pitted, castings should be replaced.



DETAIL E  
SCALE 1 : 2.5

NOTES:  
STAINLESS STEEL FASTENERS NOT DEPICTED

### (3) P/N B-FLANGE HARDWARE

Stainless Steel Flange Fasteners/Hardware Kit,  
Includes 4 Bolts, 8 Washers, 4 Nylon Lock Nut

### (1) P/N B-RING 2 BOWL

Retaining Ring to Bowl Fasteners/Hardware Kit,  
Includes 4 Bolts, 8 Washers, 4 Nylon Lock Nut

### PROPRIETARY AND CONFIDENTIAL

THE INFORMATION CONTAINED  
IN THIS DRAWING IS THE SOLE  
PROPERTY OF KECO PUMP AND  
EQUIPMENT. ANY  
REPRODUCTION IN PART OR AS  
A WHOLE WITHOUT THE  
WRITTEN PERMISSION OF  
KECO PUMP AND EQUIPMENT IS  
PROHIBITED.

### UNLESS OTHERWISE SPECIFIED:

DIMENSIONS ARE IN INCHES  
TOLERANCES:  
FRACTIONAL  $\pm 1/32$   
ONE PLACE DECIMAL  $\pm .1$   
TWO PLACE DECIMAL  $\pm .03$   
THREE PLACE DECIMAL  $\pm .020$   
ANGULAR  $\pm .5^\circ$

### MATERIAL

DRAWN	AWS		KECO PUMP AND EQUIPMENT WWW.PUMPAHEAD.COM
	PREVIOUS	CURRENT	
REVISION #	1.0	1.0	
DATE: 6/23/2015			PART NUMBER - TITLE
COMMENTS:			SUCTION VALVE REPLACEMENT
			DIMENSION: INCHES / (XX) MM
			SCALE: 3.5
			SHEET 12 OF 13

# Discharge Valve Replacement

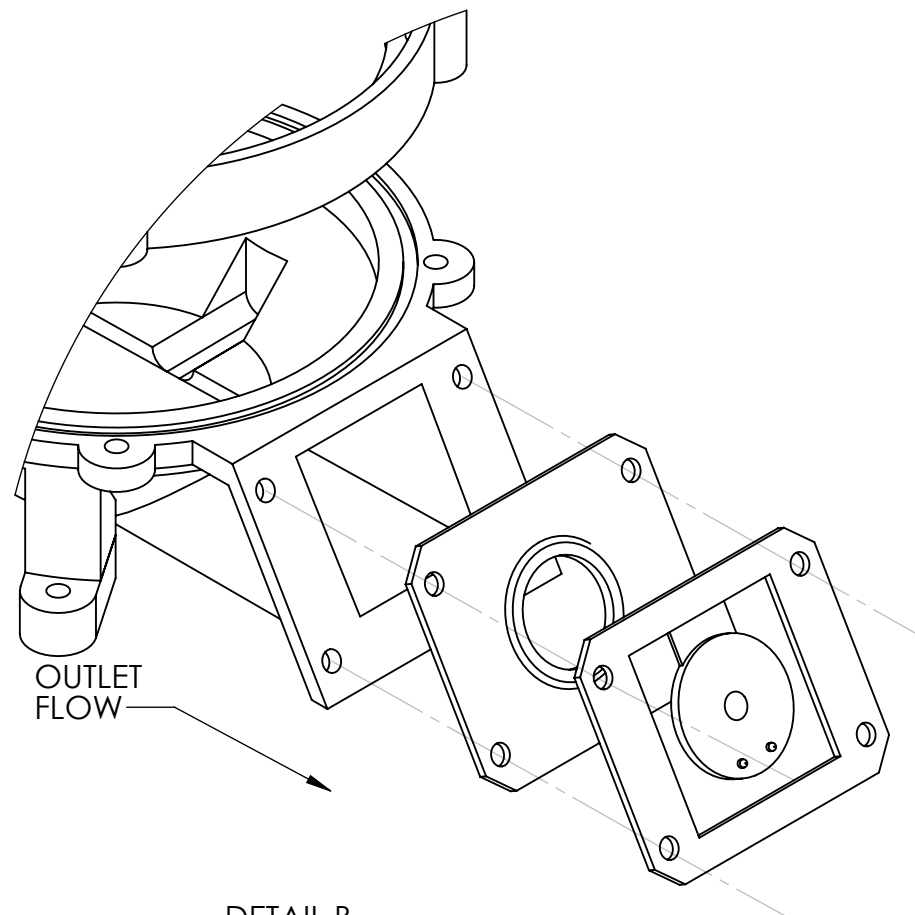
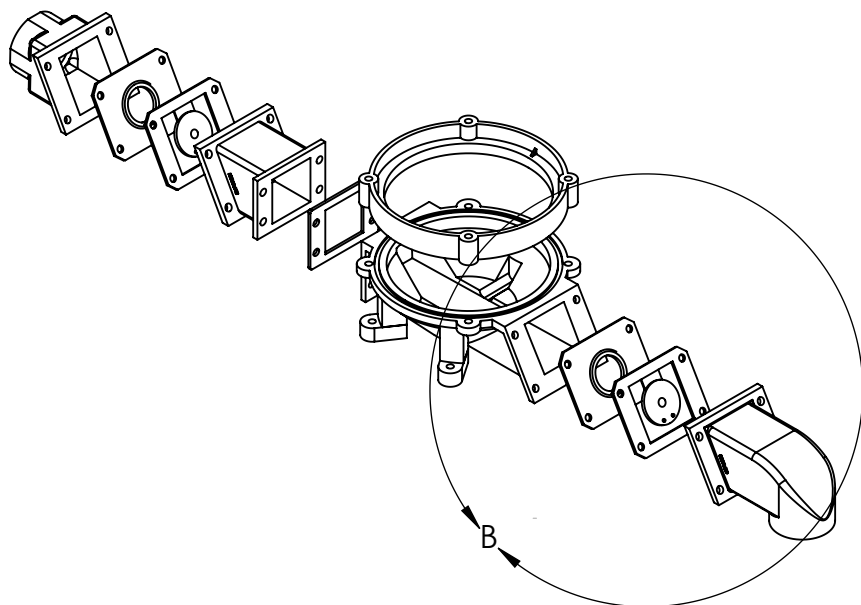
(Single / double diaphragm models)

## Important Note: *Do not over tighten valves or gasket!!*

Torque Specification is 55"/lbs or 4.5'/lbs  
without a torque wrench, this is approximately hand tight  
plus 3/4 turn for valves and gaskets.

## Important Note:

Ensure aluminum pump flanges are  
smooth and clean before installing new valves.  
If pitted or corroded, use a steel brush or  
grinding wheel to smooth and clean flange faces.  
If severely pitted, castings should be replaced.



DETAIL B  
SCALE 1 : 2.5

### NOTES:

STAINLESS STEEL FASTENERS NOT DEPICTED

#### (3) P/N B-FLANGE HARDWARE

Stainless Steel Flange Fasteners/Hardware Kit,  
Includes 4 Bolts, 8 Washers, 4 Nylon Lock Nut

#### (1) P/N B-RING 2 BOWL

Retaining Ring to Bowl Fasteners/Hardware Kit,  
Includes 4 Bolts, 8 Washers, 4 Nylon Lock Nut

### PROPRIETARY AND CONFIDENTIAL

THE INFORMATION CONTAINED  
IN THIS DRAWING IS THE SOLE  
PROPERTY OF KECO PUMP AND  
EQUIPMENT. ANY  
REPRODUCTION IN PART OR AS  
A WHOLE WITHOUT THE  
WRITTEN PERMISSION OF  
KECO PUMP AND EQUIPMENT IS  
PROHIBITED.

### UNLESS OTHERWISE SPECIFIED:

DIMENSIONS ARE IN INCHES  
TOLERANCES:  
FRACTIONAL  $\pm 1/32$   
ONE PLACE DECIMAL  $\pm .1$   
TWO PLACE DECIMAL  $\pm .03$   
THREE PLACE DECIMAL  $\pm .020$   
ANGULAR  $\pm .5^\circ$

### MATERIAL

DRAWN	AWS		KECO PUMP AND EQUIPMENT
	PREVIOUS	CURRENT	
REVISION #	1.0	1.0	WWW.PUMPAHEAD.COM
DATE: 6/23/2015			PART NUMBER - TITLE
COMMENTS:			DISCHARGE VALVE REPLACEMENT
			DIMENSION: INCHES / (XX) MM
			SCALE: 1:2.5
			SHEET 13 OF 13